



HT51 Shiplap Cladding MCA Treated and Earthen Plus Thermally Modified. Installed Vertically & Horizontally

*Make your space,
a healthy place.*

www.healthbasedbuilding.com



This construction document is based on best practice design principles inclusive of structural design, materials, risk management, fixings, installation, coatings, and maintenance working in harmony to ensure long serving performance as a built environment. Cladding performance, appearance and durability can be impacted by individual design preferences. Any attempt to alter the design principles represented in this document must be represented to Health Based Building for comment.

NOTE: Must be read in conjunction with the Earthen Product Technical Statement (PTS)

NOTE: Earthen Shiplap Cladding can be installed to a 20mm cavity batten or 40mm cavity batten.

NOTE: Where acrylic paints or oil coatings are to be applied to Earthen radiata profiles the topcoat colours must have the rating LRV45 or higher. Dark colours can encourage resin bleed and distortion leading to surface cracking, cupping, and paint failure. Application of acrylic paint or oil coatings involving colours other than those recommended by Health Based Building will void warranties connected to this product.

Contents

DWG 1/15 - Concrete Foundation Detail	3
DWG 2/15 - Timber Foundation Detail	4
DWG 3/15 - External Corner Detail	5
DWG 4/15 - Internal Corner Detail	6
DWG 5/15 - Eave - Section Detail.....	7
DWG 6/15 - Barge Eave - Section Details	8
DWG 7/15 - Roof - Wall Ridge - Section Detail	9
DWG 8/15 - Canopy Junction - Section Detail.....	10
DWG 9/15 - Horizontal Control Joint.....	11
DWG 10/15 - Vertical Control Joint	12
DWG 11/15 - Typical Head and Sill Detail.....	13
DWG 12/15 - Typical Jamb - Plan Detail	14
DWG 13/15 - Deck Threshold Detail	15
DWG 14/15 - Pipe Penetration - Plan & Section Detail	16
DWG 15/15 - Batten Fixing	17
DWG 1/15 - Concrete Foundation Detail	18
DWG 2/15 - Timber Foundation Detail	19
DWG 3/15 - External Corner Detail.....	20
DWG 4/15 - Internal Corner Detail	21
DWG 5/15 - Eave - Section Detail.....	22
DWG 6/15 - Barge - Section Detail	23
DWG 7/15 - Roof - Wall Ridge - Section Detail	24
DWG 8/15 - Canopy Junction - Section Detail.....	25
DWG 9/15 - Horizontal Control Joint	26
DWG 10/15 - Vertical Control Joint	27
DWG 11/15 - Typical Head and Sill Detail.....	28
DWG 12/15 - Typical Jamb Detail	29
DWG 13/15 - Deck Threshold Detail	30
DWG 14/15 - Pipe Penetration - Plan & Section Detail	31
DWG 15/15 - Batten Fixing	32
Nail Fixing Positions - Including Clinch Nail	33
Storage & Handling	34

DWG files available on request

150mm

100

50

10mm

0

9mm Magnum Board®
rigid air barrier

HBB Earthen HT51 Shiplap
cladding

H3.2 pine 40x40mm horizontal
castellated structural cavity battens
@ 400crs fixed @ stud crs

Face fixed with Silicon Bronze
Rose head 65x3.25mm annular
grooved nails

50mm SS clinch nails @ board laps

Cavity closure allow 15mm drip
edge to bottom of cladding

50mm min cladding
overhang

Allow 15mm drip edge
to bottom of cladding

150mm to finish paving

Refer to E2/AS1 for
threshold detail

9mm Magnum Board®
wall lining, Foreverbreathe
paint finish

H1.2 LVL studs @ 600crs
max

Selected HBB timber
skirting.

Wall lining fixed with
Fortress 6gx32 C3 galv
screws

90x3/15 s/s nail fixing for
structural cavity batten.
Refer fixing note

DPC between all timber
and concrete

Concrete floor slab, refer
to drawings

6mm min gap between
back of rigid air barrier and
concrete perimeter

Concrete Foundation Detail

1 : 2

Fixing Note:

90mm x 3.15mm flat head stainless steel nails are required when connecting through Magnum board or into CCA treated timber.

Refer page 15/15 for batten fixing details. 45x20 H3.2 non-structural cavity battens can be installed provided cladding fixing is guaranteed at a minimum 30mm framing.

1/15

HT51 Vertical Shiplap Details

Concrete Foundation Detail



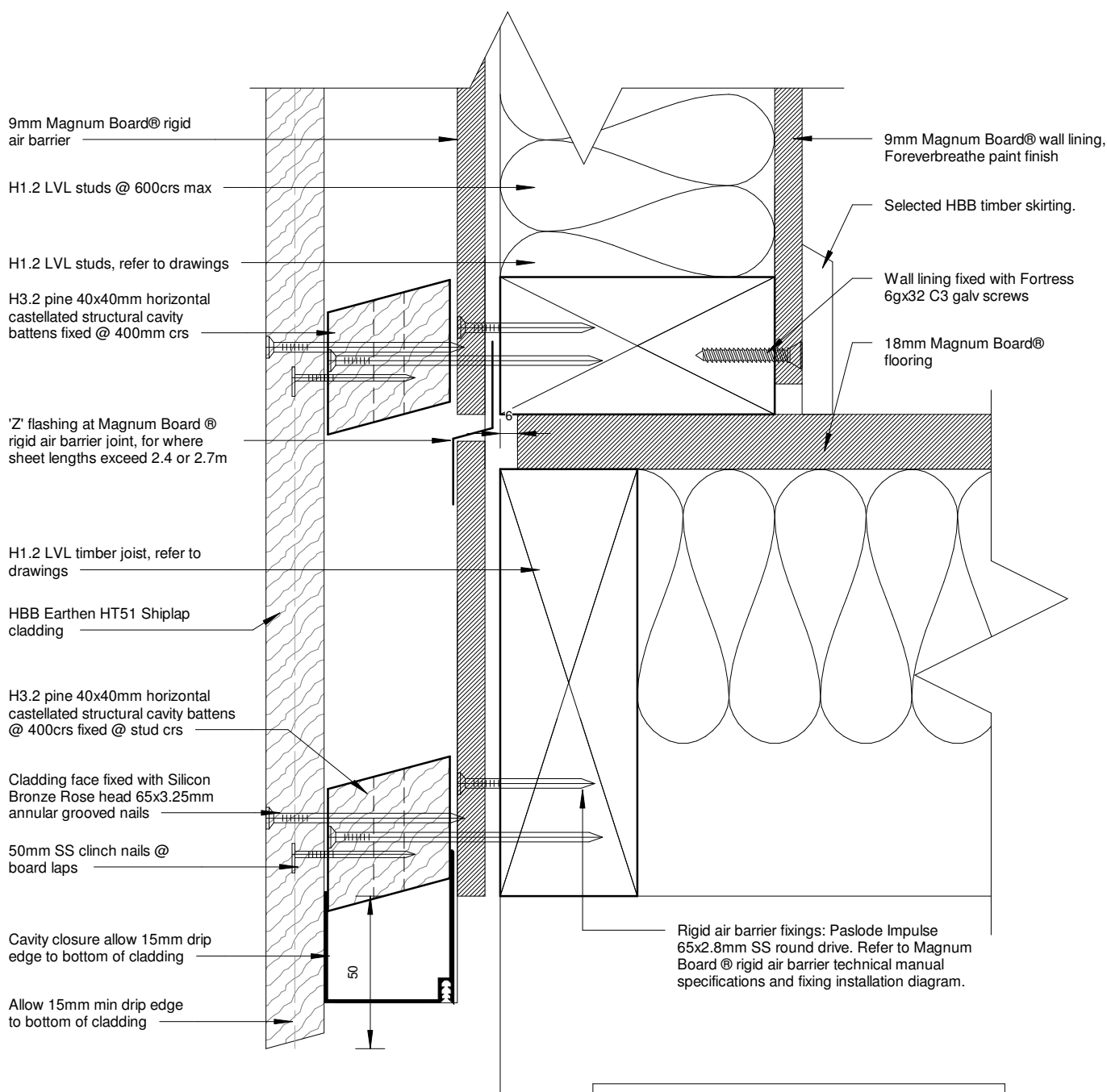
150mm

100

50

10mm

13/12/2021 1:13:07 PM



Timber Foundation Detail

1 : 2

Fixing Note:

90mm x 3.15mm flat head stainless steel nails are required when connecting through Magnum board or into CCA treated timber.

Refer page 15/15 for batten fixing details. 45x20 H3.2 non-structural cavity battens can be installed provided cladding fixing is guaranteed at a minimum 30mm framing.



2/15

HT51 Vertical Shiplap Details

Timber Foundation Detail



150mm

100

50

10mm

13/12/2021 1:13:07 PM

9mm Magnum Board®
wall lining, Foreverbreathe
paint finish

H1.2 LVL studs @ 600crs
max

Wall lining fixed with
Fortress 6x32 C3 galv
screws

Cladding face fixed with Silicon
Bronze Rose head 65x3.25mm
annular grooved nails

50mm SS clinch nails @
board laps

HBB Earthen HT51 Shiplap
cladding

9mm Magnum Board® rigid air
barrier fixed with Paslode
Impulse 65x2.8mm SS round
drive. Refer to Magnum Board®
rigid air barrier technical manual
specifications.

H3.2 pine 40x40mm horizontal
castellated structural cavity
battens @ 400crs fixed @ stud
crs

75x75 uPVC external corner
back flashing

Mapei Mapeflex PU45 joint sealant to
all Magnum board air barrier joints

HBB Earthen 90x20 cover board

135

30

70

20

5

30

90

External Corner Detail

1 : 2

Fixing Note:

90mm x 3.15mm flat head stainless steel nails are required
when connecting through Magnum board or into CCA
treated timber.

Refer page 15/15 for batten fixing details. 45x20 H3.2 non-
structural cavity battens can be installed provided cladding
fixing is guaranteed at a minimum 30mm framing.



3/15

HT51 Vertical Shiplap Details

External Corner Detail



150mm
100
50
0 10mm

H1.2 LVL studs @ 600crs max

50

50

Wall lining fixed with Fortress 6gx32 C3 galv screws

Rigid air barrier fixed with Paslode Impulse 65x2.8mm SS round drive. Refer to Magnum Board® rigid air barrier technical manual specifications.

Mapei Mapeflex PU45 joint sealant to all Magnum board air barrier joints

9mm Magnum Board® rigid air barrier

HBB Earthen 50x50 corner trim

75x75 uPVC internal corner flashing

9mm Magnum Board® wall lining, Foreverbreathe paint finish

H3.2 pine 40x40mm horizontal castellated structural cavity battens @ 400crs fixed @ stud crs

50mm SS clinch nails @ board laps

Cladding face fixed with Silicon Bronze Rose head 65x3.25mm annular grooved nails

HBB Earthen HT51 Shiplap cladding

Internal Corner Detail

1 : 2

Fixing Note:

90mm x 3.15mm flat head stainless steel nails are required when connecting through Magnum board or into CCA treated timber.

Refer page 15/15 for batten fixing details. 45x20 H3.2 non-structural cavity battens can be installed provided cladding fixing is guaranteed at a minimum 30mm framing.

13/12/2021 1:13:07 PM



4/15

HT51 Vertical Shiplap Details

Internal Corner Detail



150mm

100

50

10mm

0

Selected profiled metal roofing
on roofing underlay

Ensure roofing underlay is laid
horizontally and over top of eaves
flashing. Ensure roof fixing does
not penetrate eave flashing

Folded 0.55BMT Prefinished
metal eaves flashing with hem
at top edge

Selected spouting

Provide solid blocking for fixing

Hardie and Thompson. Earthen®
fascia board

9mm Magnum Board® soffit
lining, flush stopped, paint finish

HBB Earthen® soffit moulding

50mm SS clinch nails @ board laps

Cladding face fixed with Silicon Bronze Rose head
65x3.25mm annular grooved nails

H3.2 pine 40x40mm horizontal castellated structural
cavity battens @ 400crs fixed @ stud crs

HBB Earthen HT51 Shiplap cladding

9mm Magnum Board® rigid air barrier fixed
with Paslode Impulse 65x2.8mm SS round
drive. Refer to Magnum Board® rigid air
barrier technical manual specifications.

Roof structure in
accordance with
NZS3604 or specific
Engineering design

Wall lining fixed with
Fortress 6gx32 C3 galv
screws

9mm MAGNUM board®
wall and ceiling lining,
paint finish

H1.2 LVL studs @ 600crs

Eave - Section Detail

1 : 5

Fixing Note:

90mm x 3.15mm flat head stainless steel nails are required
when connecting through Magnum board or into CCA
treated timber.

Refer page 15/15 for batten fixing details. 45x20 H3.2 non-
structural cavity battens can be installed provided cladding
fixing is guaranteed at a minimum 30mm framing.

13/12/2021 1:13:07 PM



5/15

HT51 Vertical Shiplap Details

Eave - Section Detail



150mm

100

50

10mm

0

0.55BMT metal barge
flashing to match roofing
with two crests(Min.) cover
to roofings

HBB Earthen® fascia board

Z - Refer
Table 7

Y-Refer table 7 E2/AS1

Selected profile metal
roofing on roofing
underlay

Roof structure as per NZS3604
2011 or specific engineering
design

9mm Magnum Board® soffit lining, flush
stopped, paint finish

HBB ® soffit moulding

50mm SS clinch nails @ board laps

Cladding face fixed with Silicon Bronze Rose
head 65x3.25mm annular grooved nails

H3.2 pine 40x40mm horizontal castellated structural
cavity battens @ 400crs fixed @ stud crs

HBB Earthen HT51 Shiplap cladding

9mm Magnum Board ® rigid air barrier fixed with
Paslode Impulse 65x2.8mm SS round drive.
Refer to Magnum Board ® rigid air barrier
technical manual specifications.

Wall lining fixed with
Fortress 6gx32 C3 galv
screws

9mm MAGNUM
board® wall and ceiling
lining, paint finish

H1.2 LVL studs @
600crs

Barge Eave - Section Detail

1 : 5

Fixing Note:

90mm x 3.15mm flat head stainless steel nails are required
when connecting through Magnum board or into CCA
treated timber.

Refer page 15/15 for batten fixing details. 45x20 H3.2 non-
structural cavity battens can be installed provided cladding
fixing is guaranteed at a minimum 30mm framing.

13/12/2021 1:13:07 PM



6/15

HT51 Vertical Shiplap Details

Barge Eave - Section Details



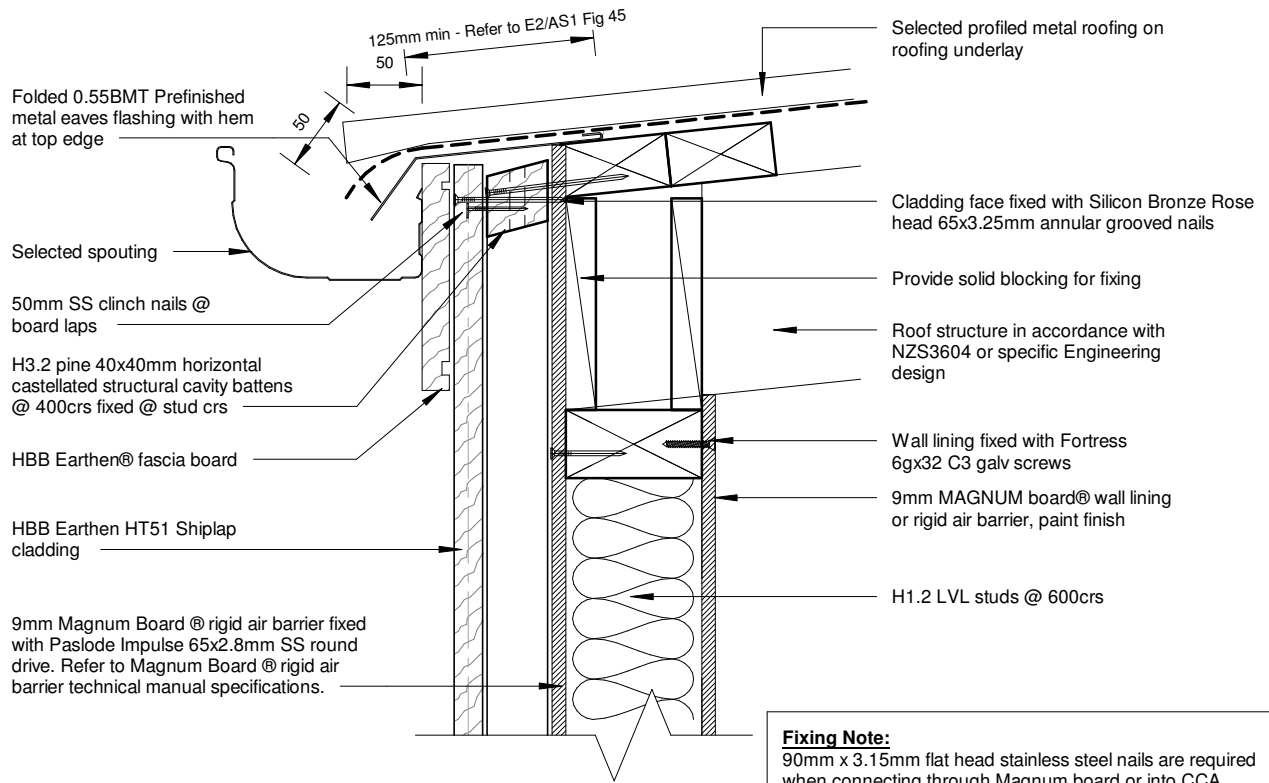
150mm

100

50

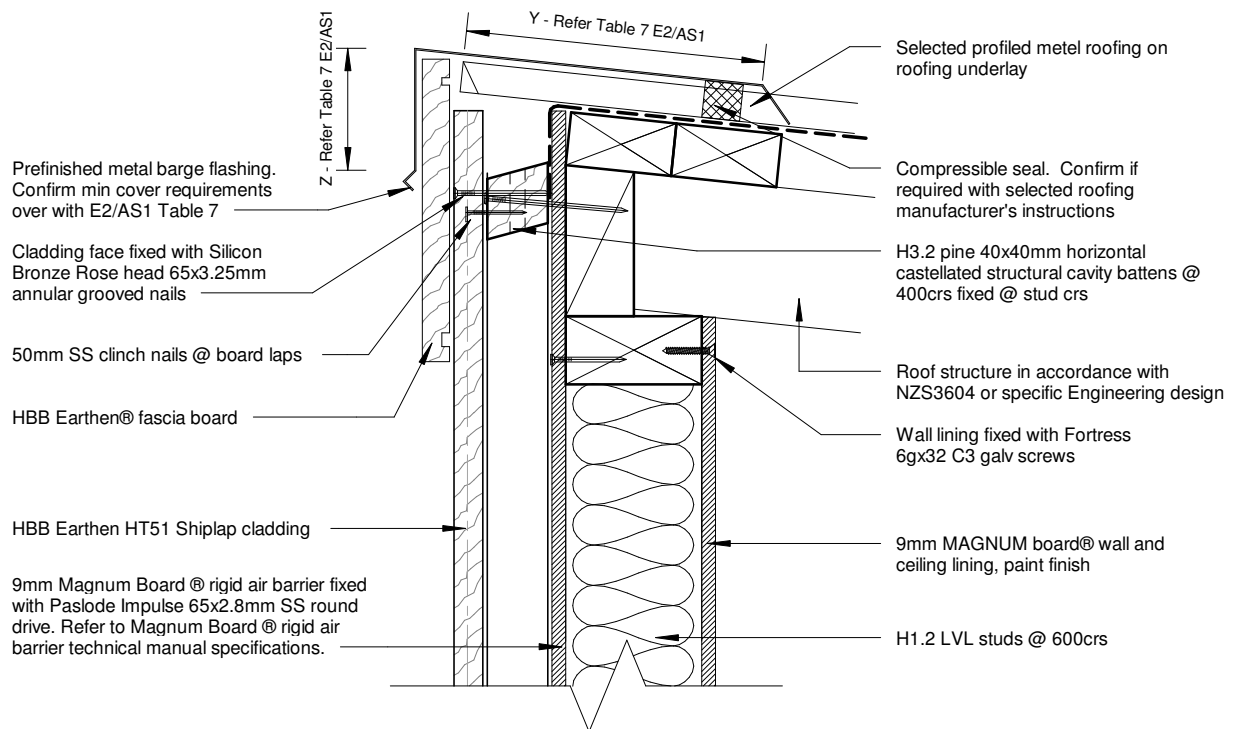
10mm

0



Barge - No Soffit - Section Detail

1 : 5



Roof - Wall ridge - Section Detail

1 : 5

7/15

HT51 Vertical Shiplap Details
Roof - Wall Ridge - Section Detail



13/12/2021 1:13:08 PM

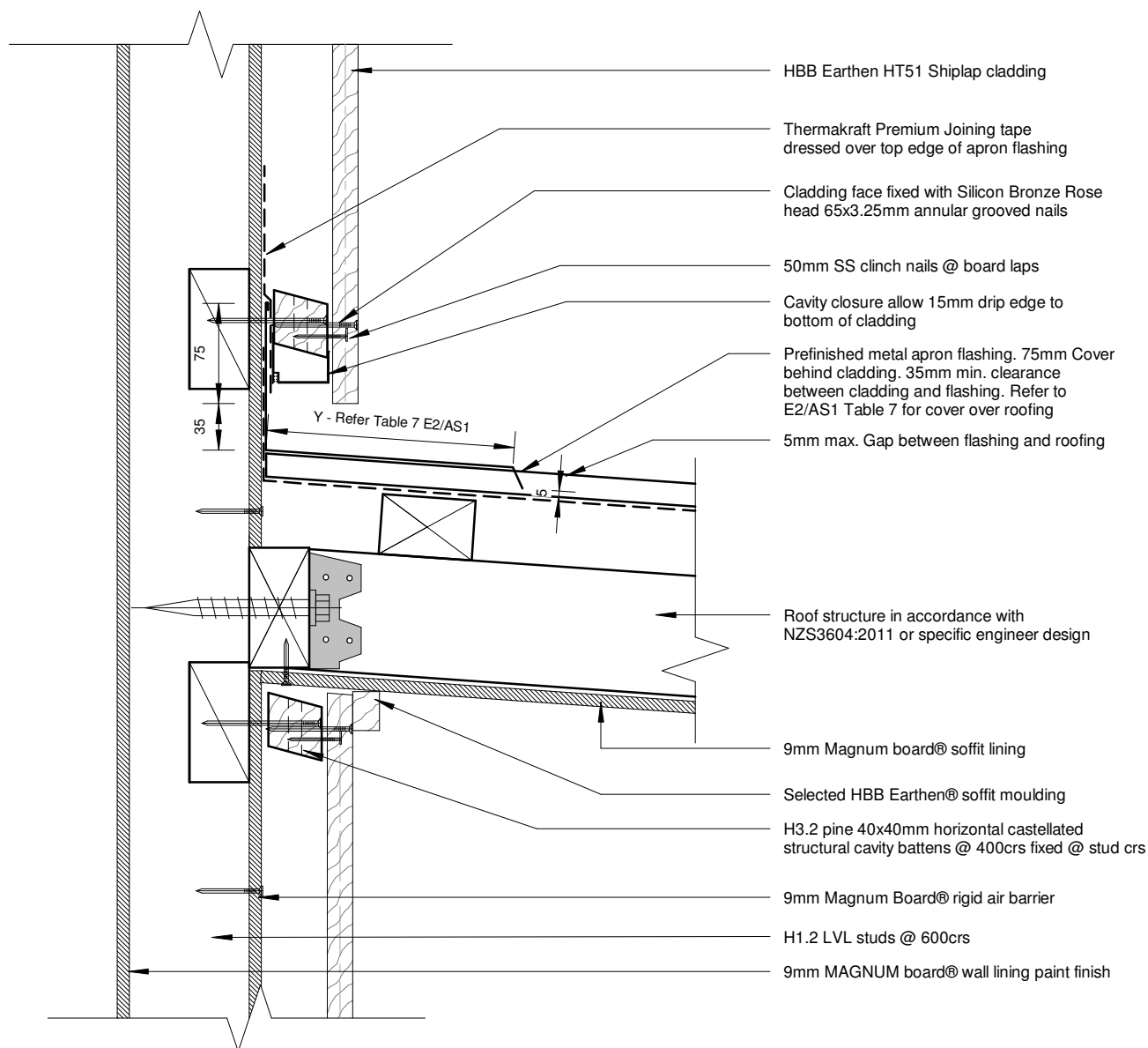
150mm

100

50

10mm

13/12/2021 1:13:08 PM



Canopy Junction - Section Detail

1 : 5

Fixing Note:

90mm x 3.15mm flat head stainless steel nails are required when connecting through Magnum board or into CCA treated timber.

Refer page 15/15 for batten fixing details. 45x20 H3.2 non-structural cavity battens can be installed provided cladding fixing is guaranteed at a minimum 30mm framing.

8/15

HT51 Vertical Shiplap Details
Canopy Junction - Section Detail



150mm
100
50
10mm
0

9mm MAGNUM board® wall lining,
paint finish

H1.2 LVL studs @ 600crs

Wall lining fixed with Fortress
6gx32 C3 galv screws

H1.2 Bottom plate

Fixing Note:

90mm x 3.15mm flat head stainless steel nails are required
when connecting through Magnum board or into CCA
treated timber.

Refer page 15/15 for batten fixing details. 45x20 H3.2 non-
structural cavity battens can be installed provided cladding
fixing is guaranteed at a minimum 30mm framing.

Floor joists refer to plan

35mm Min cover
flashing over cladding.

H1.2 Top plate

HBB Earthen HT51 Shiplap
cladding

9mm Magnum Board ® rigid air
barrier fixed with Paslode Impulse
65x2.8mm SS round drive. Refer to
Magnum Board ® rigid air barrier
technical manual specifications.

9mm Magnum Board ® rigid air barrier

Thermakraft Premium Joining tape
dressed over horizontal control joint

Mapei Mapeflex PU45 joint
sealant to all Magnum board air
barrier joints

10 - 12mm min horizontal control
joint. Required where wall exceeds
2700mm in height

H3.2 pine 40x40mm horizontal
castellated structural cavity battens
@ 400crs fixed @ stud crs

Thermakraft Premium Joining tape
dressed over top edge of horizontal
Z-flashing

Cladding face fixed with Silicon
Bronze Rose head 65x3.25mm
annular grooved nails

50mm SS clinch nails @ board laps

Cavity closure allow 15mm drip edge
to bottom of cladding

Pre-finished metal, purpose made
flashing. 15° min slope. Refer to table
20 of E2/AS1 for flashing durability

35mm Min cover
flashing over cladding.

Vertical Detail - Horizontal Control Joint

1 : 2

9/15

HT51 Vertical Shiplap Details

Horizontal Control Joint



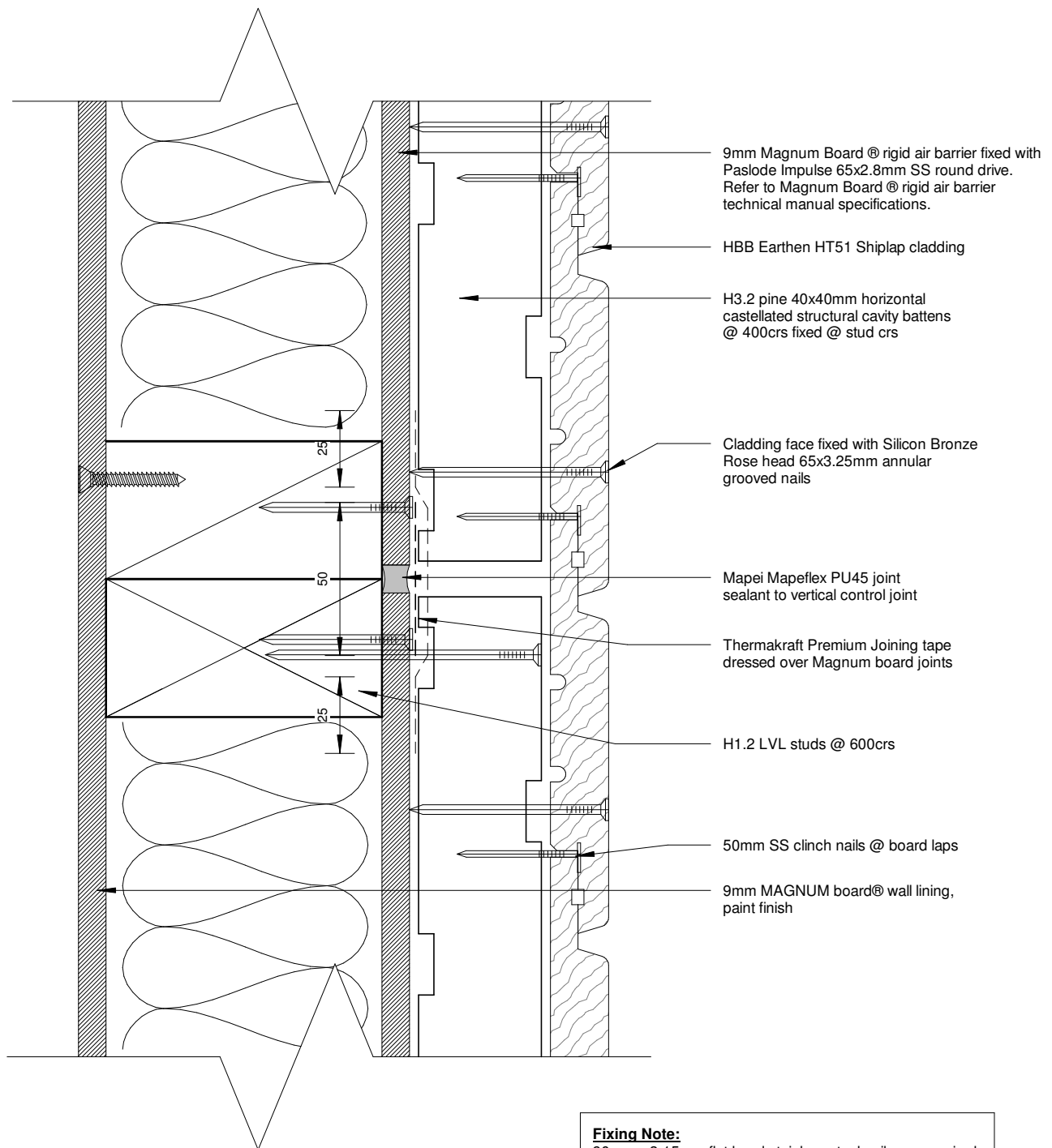
150mm

100

50

10mm

13/12/2021 1:13:09 PM



Plan Detail - Vertical Control Joint
1 : 2

Fixing Note:

90mm x 3.15mm flat head stainless steel nails are required when connecting through Magnum board or into CCA treated timber.

Refer page 15/15 for batten fixing details. 45x20 H3.2 non-structural cavity battens can be installed provided cladding fixing is guaranteed at a minimum 30mm framing.

10/15

HT51 Vertical Shiplap Details
Plan Detail - Vertical Control Joint



9mm Magnum Board ® rigid air barrier fixed with Paslode Impulse nail 65x2.8mm SS round drive. Refer to Magnum Board ® rigid air barrier technical manual specifications.

HBB Earthen HT51 Shiplap cladding

H3.2 pine 40x40mm horizontal castellated structural cavity battens @ 400crs fixed @ stud crs

Cladding face fixed with Silicon Bronze Rose head 65x3.25mm annular grooved nails

50mm SS clinch nails @ board laps

Folded aluminium head flashing supplied and installed by Flashman

Bottom of cladding must be hard down on top of flashman jamb fin

Flashman ® extruded aluminium one piece cavity closer and head flashing with stop end (shown dashed)

35mm min. Flashing upstand behind cladding, and 10mm min. cover over joinery

Flashman extruded aluminium jamb flashing

H1.2 LVL studs @ 600crs

H1.2 LVL studs, refer to drawings

9mm MAGNUM board® wall lining, paint finish

Thermakraft Premium Joining tape dressed over top edge of head flashing

H3.1 packer supplied and installed by Flashman

H1.2 Lintel refer to plan

Thermaflash flashing tape dressed into opening and 50mm over face of rigid air barrier

Continuous PEF backing rod to perimeter of opening

H3.2 packing

Selected Foreverbeech® timber reveal

Typical Head - Section Detail

1 : 5

Fixing Note:

90mm x 3.15mm flat head stainless steel nails are required when connecting through Magnum board or into CCA treated timber.

Refer page 15/15 for batten fixing details. 45x20 H3.2 non-structural cavity battens can be installed provided cladding fixing is guaranteed at a minimum 30mm framing.

9mm Magnum Board ® rigid air barrier fixed with Paslode Impulse 65x2.8mm SS round drive. Refer to Magnum Board ® rigid air barrier technical manual specifications.

Flashman® extruded aluminium slimline line sill flashing

H3.1 Packer supplied and installed by flashman

Flashman back plate (Shown dashed)

Cladding face fixed with Silicon Bronze Rose head 65x3.25mm annular grooved nails

50mm SS clinch nails @ board laps

H3.2 pine 40x40mm horizontal castellated structural cavity battens @ 400crs fixed @ stud crs

HBB Earthen HT51 Shiplap cladding

Flashman ® aluminium mitre soaker supplied by flashman

HBB Earthen ® timber reveal

Continuous PEF backing rod to perimeter of opening

H3.2 packer

Wall lining fixed with Fortress 6gx32 C3 galv screws

Thermaflash flashing tape dressed into opening and 50mm over face of rigid air barrier

H1.2 LVL studs @ 600crs

14 Gauge Hot Dip Galvanised (316 SS Where required) S.T. H.C Screws at 600mm crs with 65mm min. frame penetration. Supplied and installed by flashing ®. Refer to E2/AS for durability requirements

9mm MAGNUM board® wall lining, paint finish

Typical Sill - Section Detail

1 : 5



11/15

HT51 Vertical Shiplap Details

Typical Head and Sill Detail



150mm

100

50

10mm

0

9mm MAGNUM board® wall lining,
paint finish

H1.2 LVL studs @ 600crs

9mm Magnum Board ® rigid air barrier
fixed with Paslode Impulse nail
65x2.8mm SS round drive. Refer to
Magnum Board ® rigid air barrier
technical manual specifications.

H3.2 pine 40x40mm horizontal
castellated structural cavity battens
@ 400crs fixed @ stud crs

HBB Earthen HT51 Shiplap
cladding

50mm SS clinch nails @ board laps

Cladding face fixed with Silicon Bronze Rose
head 65x3.25mm annular grooved nails

Flashman® extruded 40mm aluminium
jamb flashing

10

Foreverbeech ® timber
reveal and architrave

Continuous flexible air seal
on PEF backing rod to
perimeter of opening

Timber packer as required

Thermaflash flashing tape dressed into
opening and 50mm over face of rigid
air barrier

Selected double glazed aluminium joinery

H3.1 packer supplied and
installed by Flashman

Head flashing over (Shown
dashed)
10mm min. joinery cover over
jamb flashing

Line of flashing slimline ® sill below

2mm gap between shiplap and jamb
flashing.

39

2

10

**DO NOT FIX THROUGH JAMB
FLASHING**

Typical Jamb - Plan Detail

1 : 5

Fixing Note:

90mm x 3.15mm flat head stainless steel nails are required
when connecting through Magnum board or into CCA
treated timber.

Refer page 15/15 for batten fixing details. 45x20 H3.2 non-
structural cavity battens can be installed provided cladding
fixing is guaranteed at a minimum 30mm framing.

12/15

HT51 Vertical Shiplap Details

Typical Jamb - Plan Detail



150mm

100

50

10mm

13/12/2021 1:13:10 PM

Thermaflash flashing tape dressed into opening
and 50mm over face of rigid air barrier

18mm Magnum Board® flooring

Continuous PEF backing rod
to perimeter of opening

H1.2 LVL timber joist, refer
to drawings

12mm gap between stringer and
cladding/joinery

Decking as per drawings, joist sizes
and fixings in accordance with
NZS3604:2011

Deck stringer and fixings in
accordance with NZS3604:2011
or specific engineering design

9mm Magnum Board® rigid air barrier fixed
with Paslode Impulse 65x2.8mm SS round
drive. Refer to Magnum Board® rigid air
barrier technical manual specifications.

H3.2 pine 40x40mm horizontal castellated structural
cavity battens @ 400crs fixed @ stud crs

Cavity closure allow 15mm drip edge to
bottom of cladding

50mm SS clinch nails @ board laps

Cladding face fixed with Silicon Bronze
Rose head 65x3.25mm annular
grooved nails

HBB Earthen HT51 Shiplap
cladding

Deck Threshold Detail

1 : 2

Fixing Note:

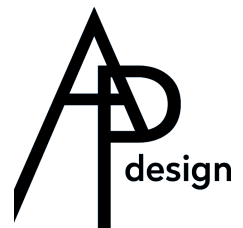
90mm x 3.15mm flat head stainless steel nails are required
when connecting through Magnum board or into CCA
treated timber.

Refer page 15/15 for batten fixing details. 45x20 H3.2 non-
structural cavity battens can be installed provided cladding
fixing is guaranteed at a minimum 30mm framing.

13/15

HT51 Vertical Shiplap Details

Deck Threshold Detail



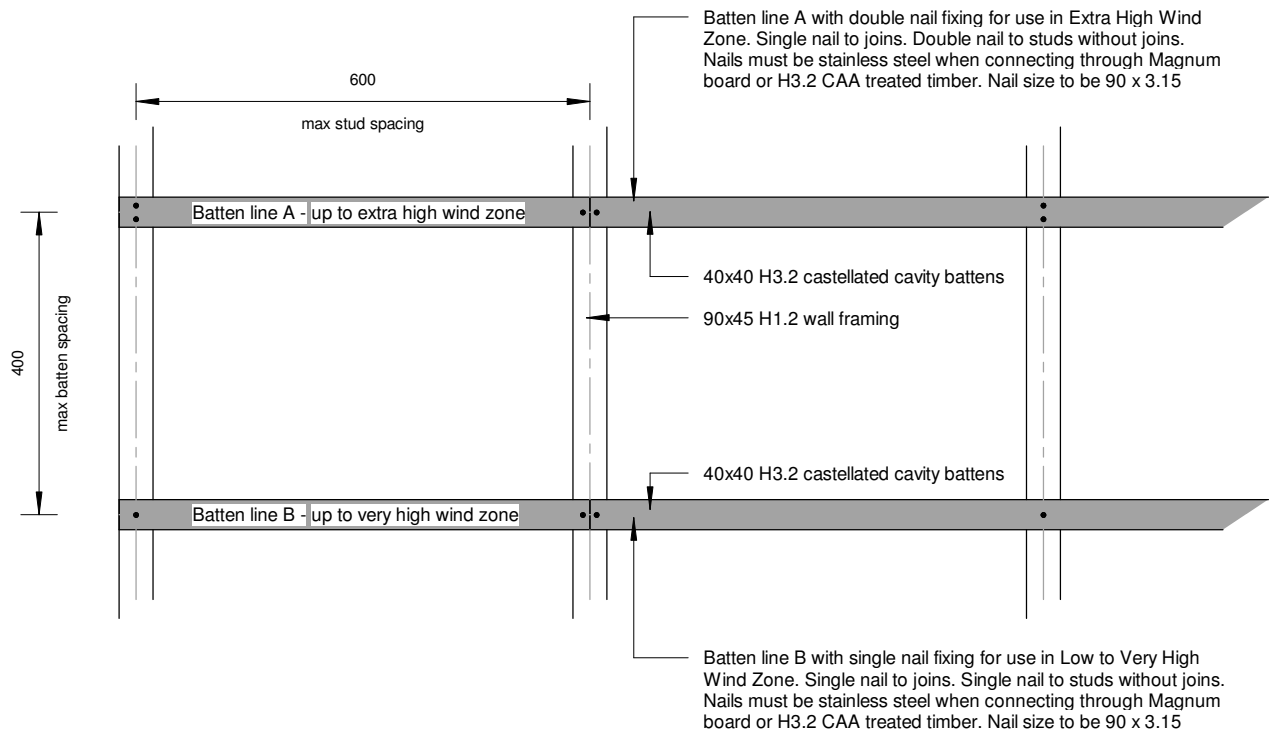
150mm

100

50

10mm

0



Batten Fixing

1 : 10

13/12/2021 1:13:11 PM



15/15

HT51 Vertical Shiplap Details

Batten Fixing



150mm

100

50

10mm

0

9mm Magnum Board®
rigid air barrier

HBB Earthen Horizontal
Shiplap cladding

H3.2 pine 40x40mm vertical structural
cavity battens fixed @ stud crs

Face fixed with Silicon Bronze
Rose head 65x3.25mm annular
grooved nails

50mm SS clinch nails @ board laps

Cavity closer allow 15mm drip
edge to bottom of cladding

50mm min cladding
overhang

150mm to finish paving

50mm min

15

Refer to E2/AS1 for
threshold detail

9mm Magnum Board® wall
lining, Foreverbreathe paint
finish

H1.2 LVL studs @ 480crs

Wall lining fixed with Fortress
6gx32 C3 galv screws

Selected HBB timber skirting.

Concrete floor slab, refer to
drawings

DPC between all timber
and concrete

6mm min gap between
back of rigid air barrier and
concrete perimeter

Fixing Note:

90mm x 3.15mm flat head stainless steel nails are required when connecting through Magnum board or into CCA treated timber.

Refer page 15/15 for batten fixing details. 45x20 H3.2 non-structural cavity battens can be installed provided cladding fixing is guaranteed at a minimum 30mm framing.

Concrete Foundation Detail

1 : 2

1/15

HT51 Horizontal Shiplap Details

Concrete Foundation Detail



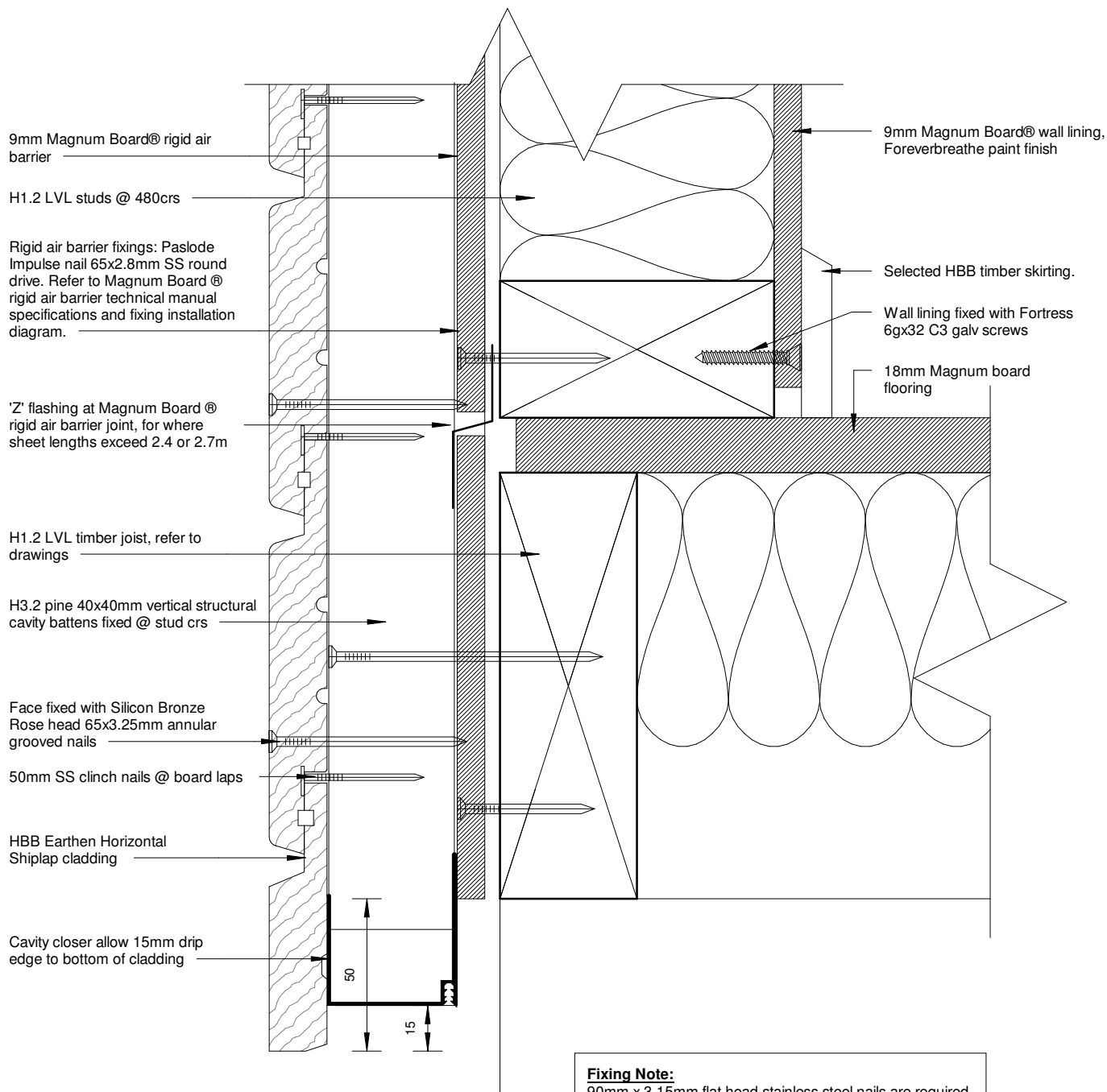
150mm

100

50

10mm

0

**Fixing Note:**

90mm x 3.15mm flat head stainless steel nails are required when connecting through Magnum board or into CCA treated timber.

Refer page 15/15 for batten fixing details. 45x20 H3.2 non-structural cavity battens can be installed provided cladding fixing is guaranteed at a minimum 30mm framing.

Timber Foundation Detail

1 : 2

2/15

HT51 Horizontal Shiplap Details

Timber Foundation Detail



150mm

100

50

10mm

0

9mm Magnum Board®
wall lining, Foreverbreath
paint finish

H1.2 LVL studs @ 480crs

Wall lining fixed with
Fortress 6gx32 C3 galv
screws

Mapei Mapeflex PU45 joint
sealant to all Magnum board air
barrier joints

75x75 uPVC external corner
back flashing

HBB Earthen Horizontal Shiplap cladding

9mm Magnum Board® rigid air barrier

H3.2 pine 40x40mm vertical structural
cavity battens fixed @ stud crs

Face fixed with Silicon Bronze
Rose head 65x3.25mm annular
grooved nails

9mm Magnum Board® rigid air barrier fixed
with Paslode Impulse nail 65x2.8mm SS
round drive. Refer to Magnum Board® rigid
air barrier technical manual specifications.

50mm SS clinch nails @ board laps

HBB Earthen H3.2 90x20mm grooved
external corner facing

HBB Earthen H3.2 70x20mm tongued
external corner facing

70

20

External Corner Detail

1 : 2

Fixing Note:

90mm x 3.15mm flat head stainless steel nails are required
when connecting through Magnum board or into CCA
treated timber.

Refer page 15/15 for batten fixing details. 45x20 H3.2 non-
structural cavity battens can be installed provided cladding
fixing is guaranteed at a minimum 30mm framing.

13/12/2021 1:14:26 PM

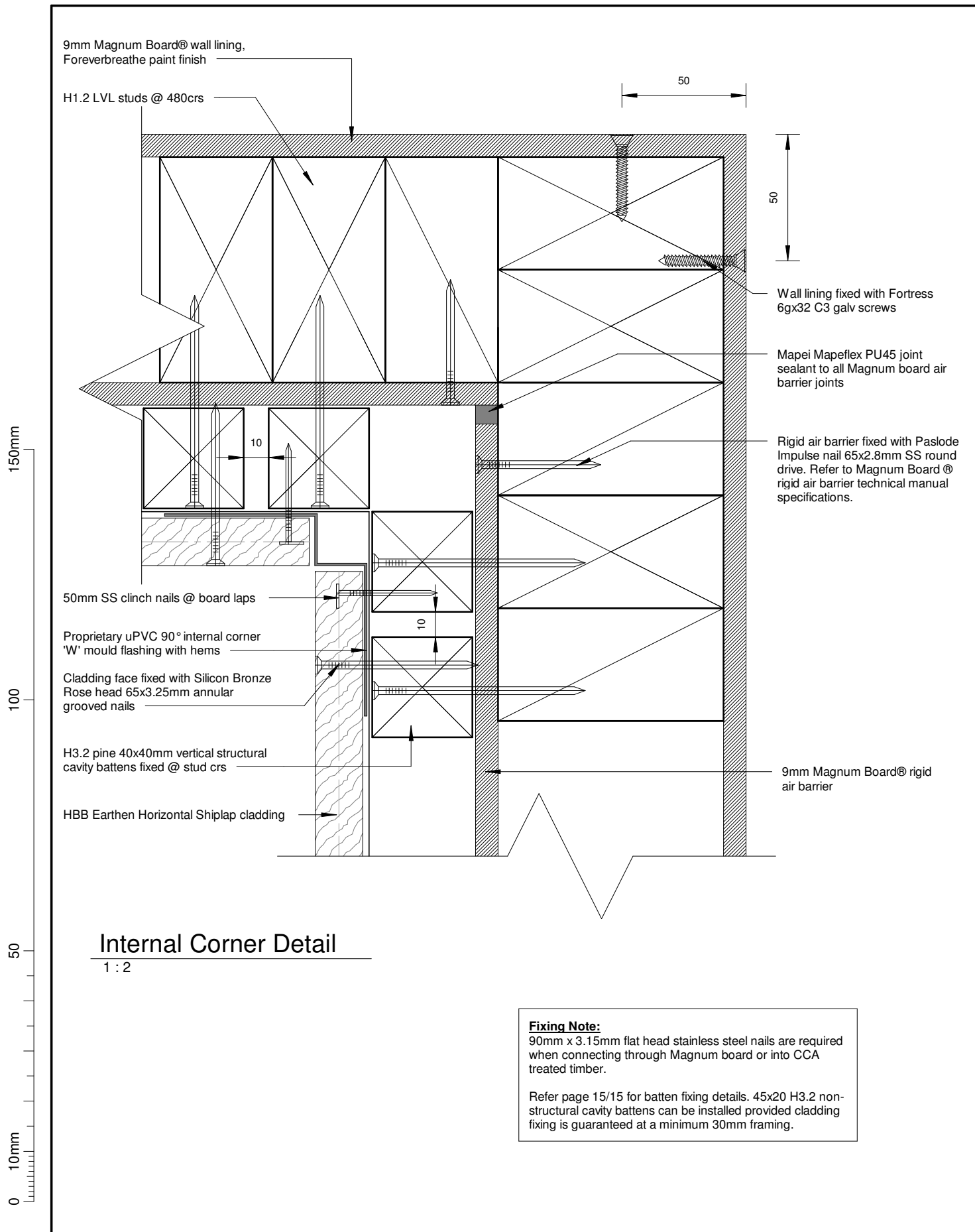


3/15

HT51 Horizontal Shiplap Details

External Corner Detail





13/12/2021 1:14:26 PM



4/15

HT51 Horizontal Shiplap Details

Internal Corner Detail



150mm

100

50

10mm

0

Selected profiled metal roofing on roofing underlay

Ensure roofing underlay is laid horizontally and over top of eaves flashing. Ensure roof fixing does not penetrate eave flashing

50

125mm min.-Refer E@/AS1 Fig. 45

Folded 0.55BMT Prefinished metal eaves flashing with hem at top edge

Selected spouting

Provide solid blocking for fixing

HBB Earthen® fascia board

9mm Magnum Board® soffit lining, flush stopped, paint finish

HBB Earthen® soffit moulding

HBB Earthen Horizontal Shiplap cladding

Cladding face fixed with Silicon Bronze Rose head 65x3.25mm annular grooved nails

H3.2 pine 40x40mm vertical structural cavity battens @ stud crs. Nail fixed @ 600crs. Refer schedule below

50mm SS clinch nails @ board laps

9mm Magnum Board® rigid air barrier fixed with Paslode Impulse nail 65x2.8mm SS round drive. Refer to Magnum Board® rigid air barrier technical manual specifications.

Roof structure in accordance with NZS3604 or specific Engineering design

H1.2 ceiling battens, refer to drawings

Wall lining fixed with Fortress 6gx32 C3 galv screws

H1.2 LVL studs @ 480crs

9mm MAGNUM board® lining, paint finish

Eave - Section Detail

1 : 5

Fixing Note:

90mm x 3.15mm flat head stainless steel nails are required when connecting through Magnum board or into CCA treated timber.

Refer page 15/15 for batten fixing details. 45x20 H3.2 non-structural cavity battens can be installed provided cladding fixing is guaranteed at a minimum 30mm framing.

5/15

HT51 Horizontal Shiplap Details

Eave - Section Detail



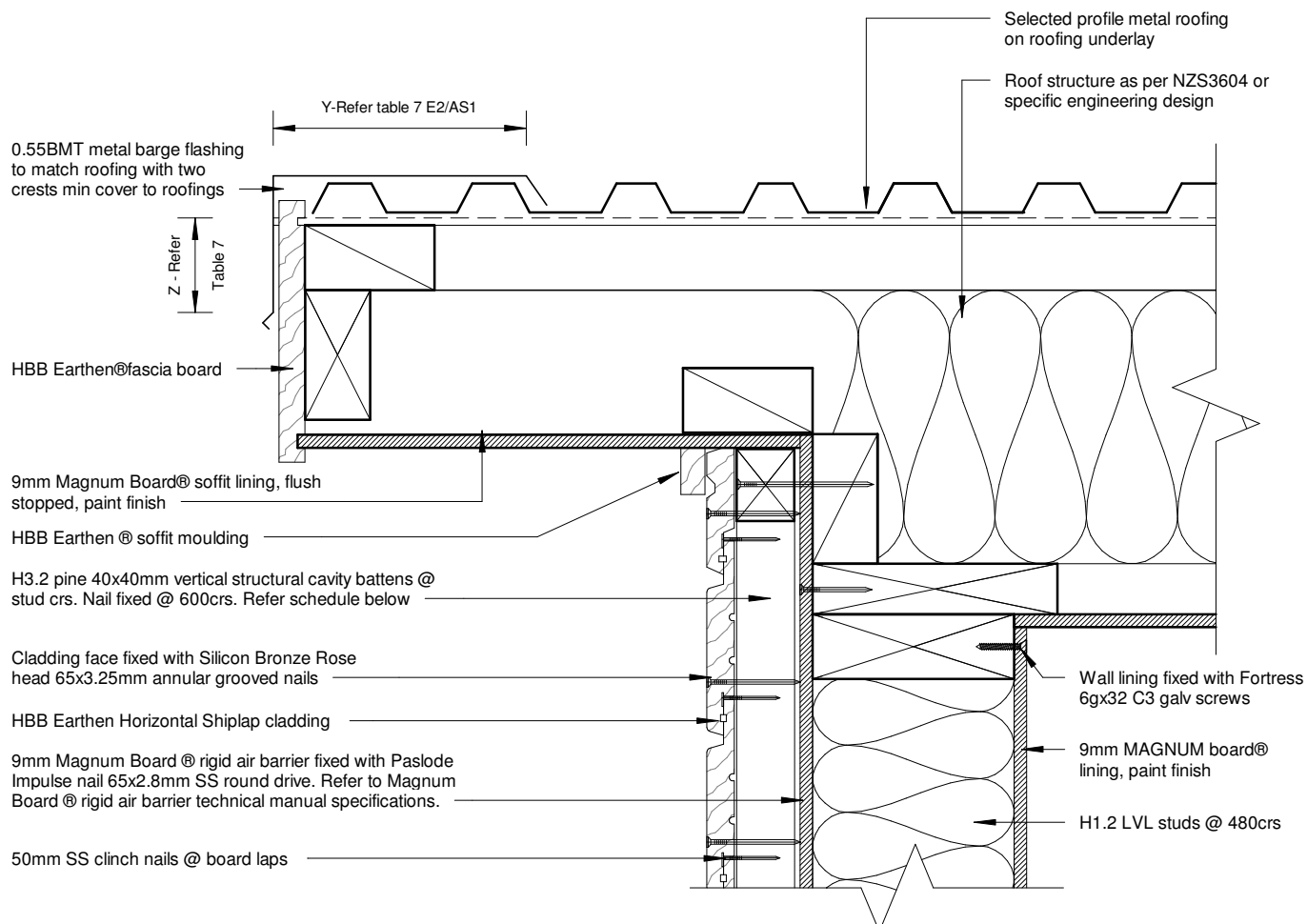
150mm

100

50

10mm

0



Barge - Sectional Detail

1 : 5

Fixing Note:

90mm x 3.15mm flat head stainless steel nails are required when connecting through Magnum board or into CCA treated timber.

Refer page 15/15 for batten fixing details. 45x20 H3.2 non-structural cavity battens can be installed provided cladding fixing is guaranteed at a minimum 30mm framing.

6/15

HT51 Horizontal Shiplap Details

Barge - Section Detail



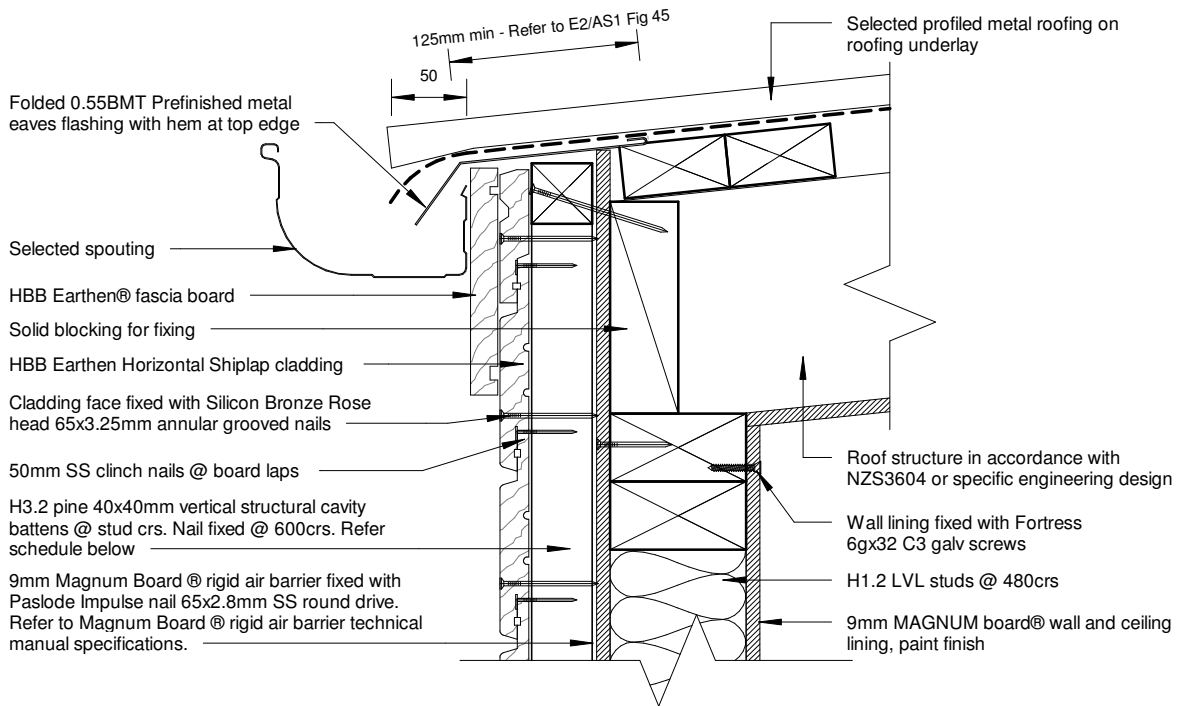
150mm

100

50

10mm

0



Barge - No Soffit Detail

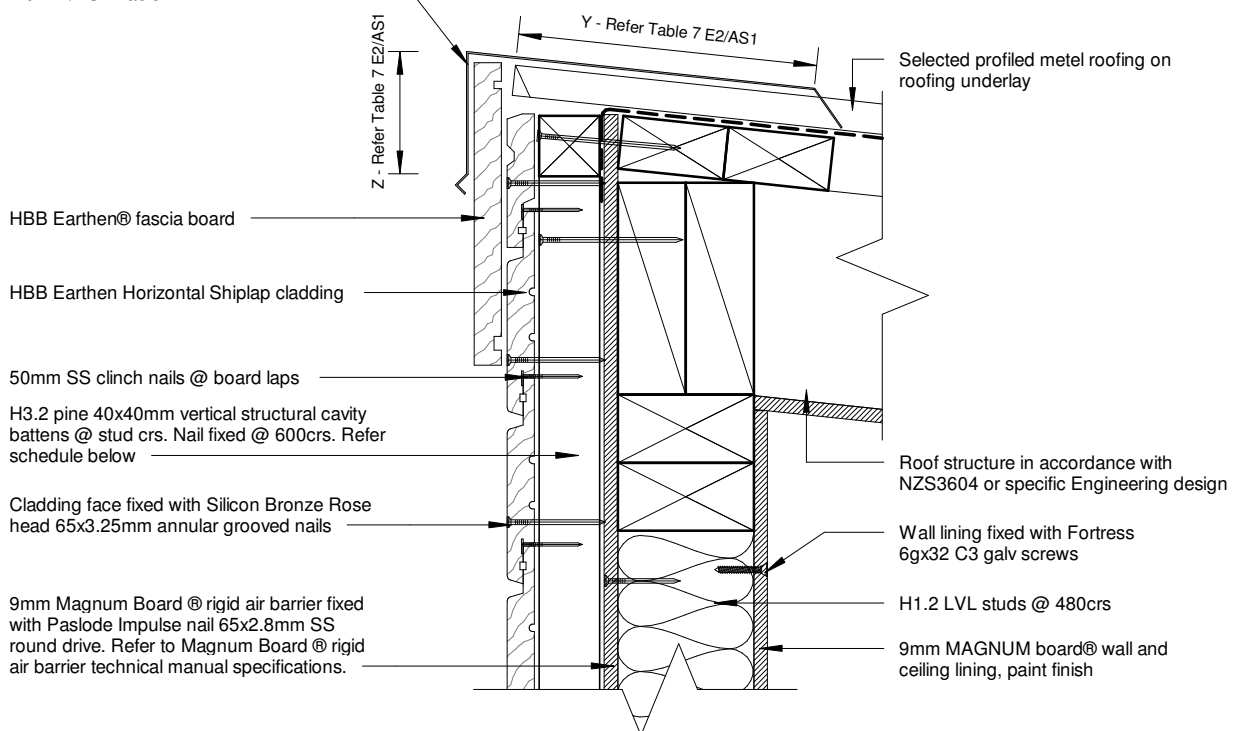
1 : 5

Fixing Note:

90mm x 3.15mm flat head stainless steel nails are required when connecting through Magnum board or into CCA treated timber.

Refer page 15/15 for batten fixing details. 45x20 H3.2 non-structural cavity battens can be installed provided cladding fixing is guaranteed at a minimum 30mm framing.

Prefinished metal barge flashing. Confirm min cover requirements over with E2/AS1 Table 7



Roof - Wall ridge - Section Detail

1 : 5

7/15

HT51 Horizontal Shiplap Details

Roof - Wall Ridge - Section Detail



13/12/2021 1:14:27 PM

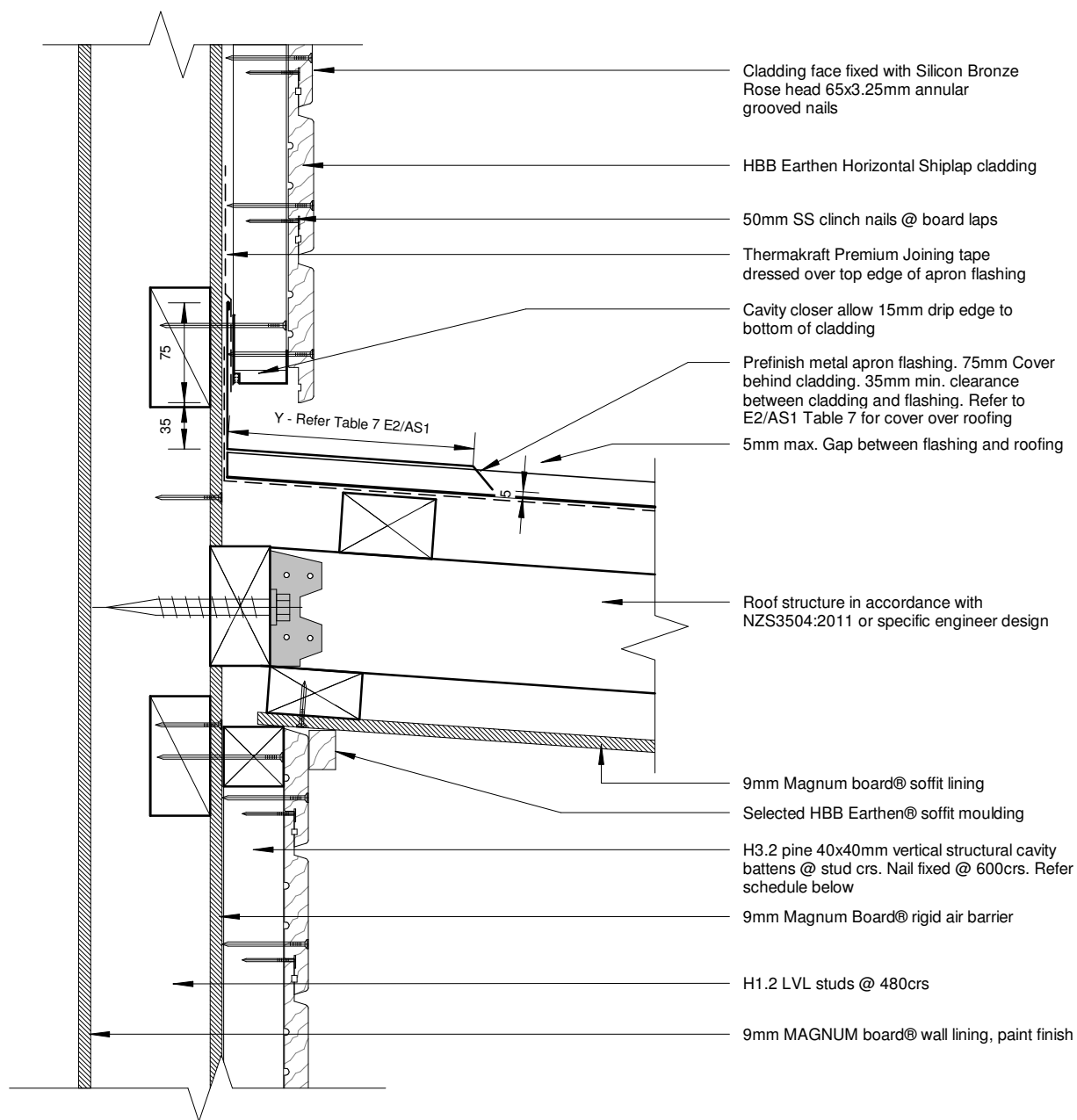
150mm

100

50

10mm

13/12/2021 1:14:27 PM



Canopy Junction - Section Detail

1 : 5

Fixing Note:

90mm x 3.15mm flat head stainless steel nails are required when connecting through Magnum board or into CCA treated timber.

Refer page 15/15 for batten fixing details. 45x20 H3.2 non-structural cavity battens can be installed provided cladding fixing is guaranteed at a minimum 30mm framing.

8/15

HT51 Horizontal Shiplap Details

Canopy Junction - Section Detail



150mm

100

50

10mm

0

9mm MAGNUM board® wall lining,
paint finish

H1.2 LVL studs @ 480crs

Wall lining fixed with Fortress
6gx32 C3 galv screws

H1.2 Bottom plate

Fixing Note:

90mm x 3.15mm flat head stainless steel nails are required when connecting through Magnum board or into CCA treated timber.

Refer page 15/15 for batten fixing details. 45x20 H3.2 non-structural cavity battens can be installed provided cladding fixing is guaranteed at a minimum 30mm framing.

Floor joists refer to plan

35mm Min cover flashing over cladding.

H1.2 Top plate

9mm Magnum Board® rigid air barrier fixed with Paslode Impulse nail 65x2.8mm SS round drive. Refer to Magnum Board® rigid air barrier technical manual specifications.

9mm Magnum Board® rigid air barrier

50mm SS clinch nails @ board laps

Thermakraft Premium Joining tape dressed over horizontal control joint

Mapei Mapeflex PU45 joint sealant to all Magnum board air barrier joints

10 - 12mm min horizontal control joint. Required where wall exceeds 2700mm in height

HBB Earthen Horizontal Shiplap cladding

Thermakraft Premium Joining tape dressed over top edge of horizontal Z-flashing

Cavity closer allow 15mm drip edge to bottom of cladding

Purpose made aluminium flashing. 15° min slope. Refer to table 20 of E2/AS1 for flashing durability

35mm Min cover flashing over cladding.

Cladding face fixed with Silicon Bronze Rose head 65x3.25mm annular grooved nails

H3.2 pine 40x40mm vertical structural cavity battens @ stud crs. Nail fixed @ 600crs. Refer schedule below

Horizontal Control Joint

1 : 2

9/15

HT51 Horizontal Shiplap Details

Horizontal Control Joint



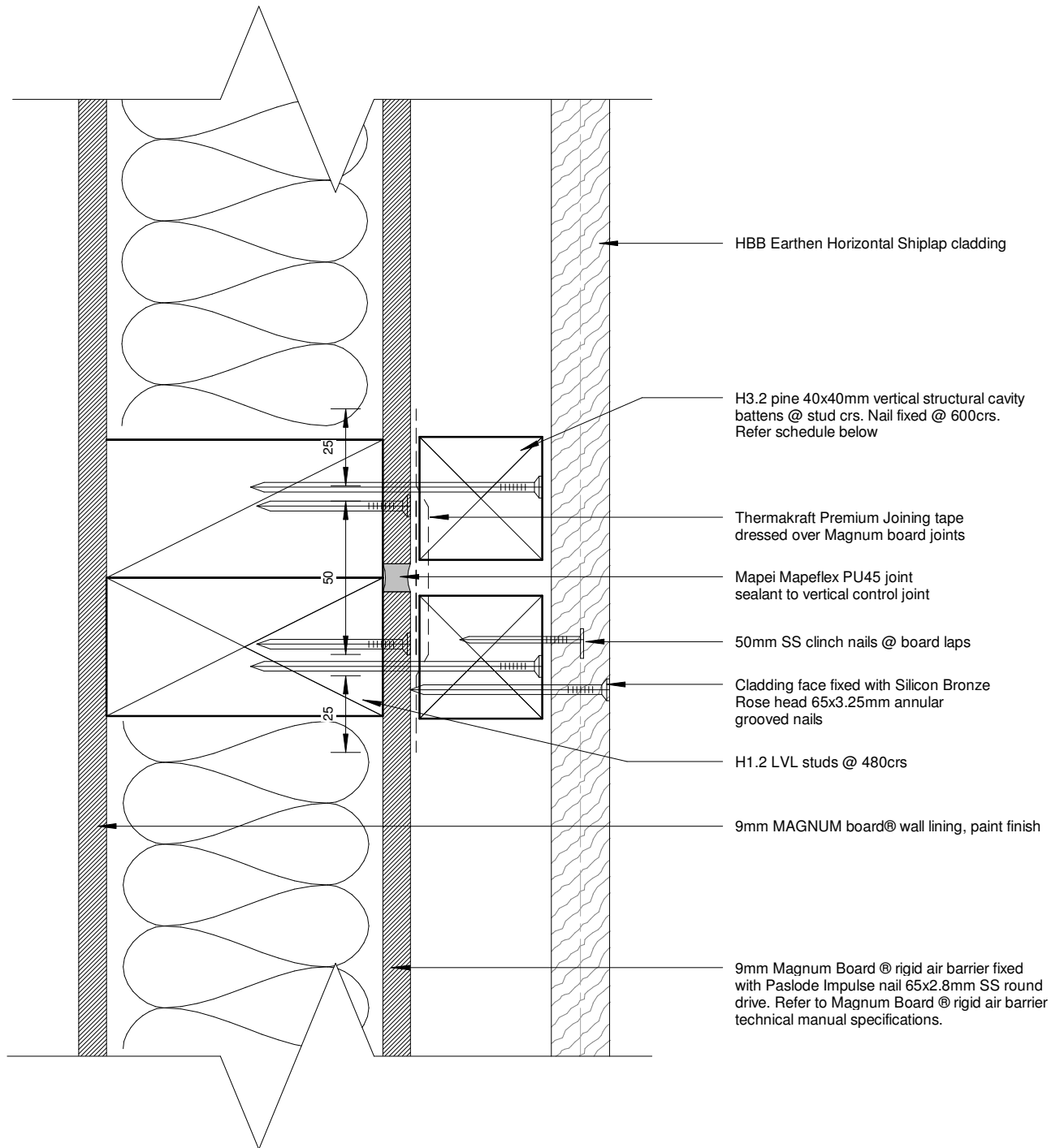
150mm

100

50

10mm

0



Vertical Control Joint

1 : 2

Fixing Note:

90mm x 3.15mm flat head stainless steel nails are required when connecting through Magnum board or into CCA treated timber.

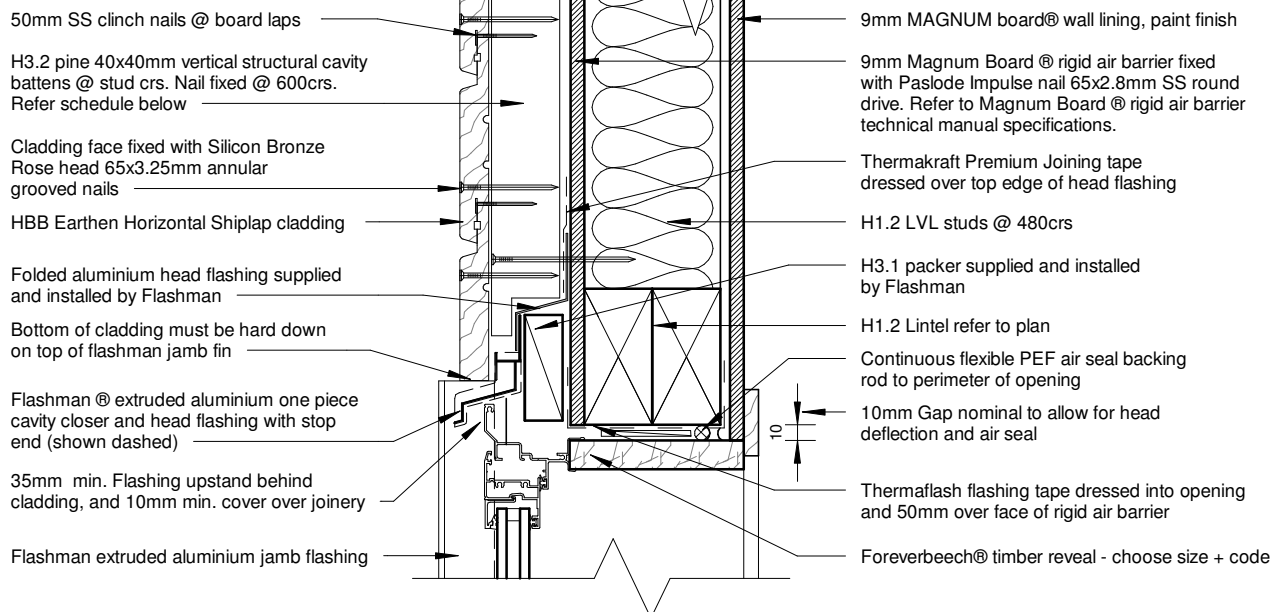
Refer page 15/15 for batten fixing details. 45x20 H3.2 non-structural cavity battens can be installed provided cladding fixing is guaranteed at a minimum 30mm framing.

10/15

HT51 Horizontal Shiplap Details

Vertical Control Joint





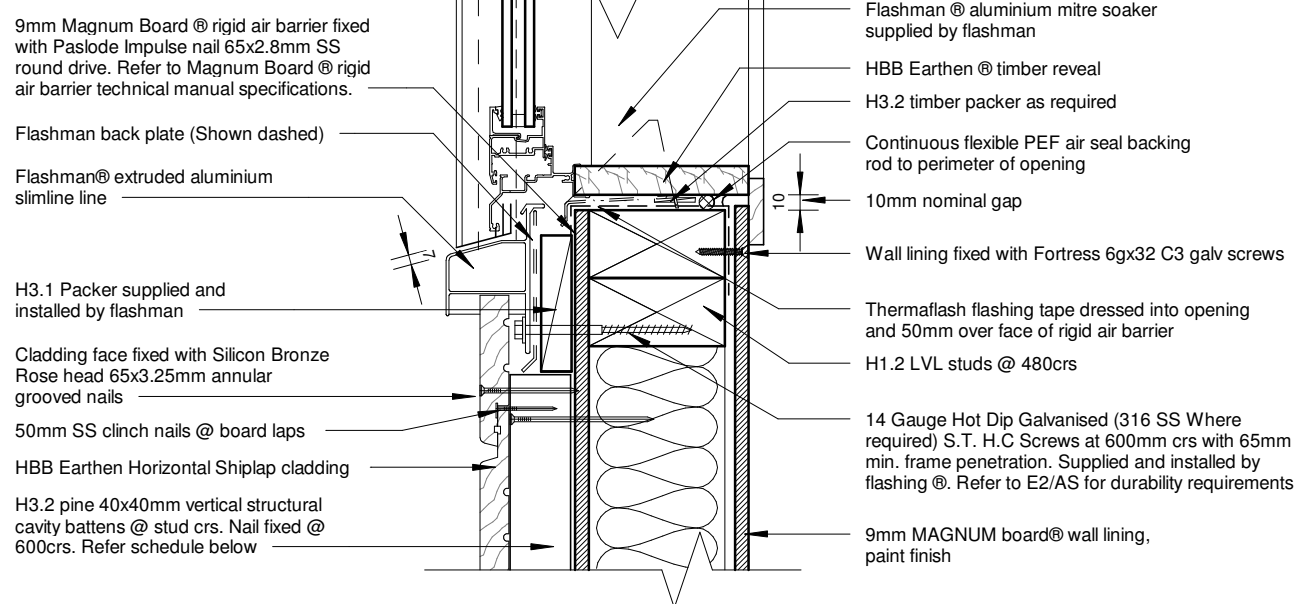
Typical Head Detail

1 : 5

Fixing Note:

90mm x 3.15mm flat head stainless steel nails are required when connecting through Magnum board or into CCA treated timber.

Refer page 15/15 for batten fixing details. 45x20 H3.2 non-structural cavity battens can be installed provided cladding fixing is guaranteed at a minimum 30mm framing.



Typical Sill Detail

1 : 5

11/15

HT51 Horizontal Shiplap Details

Typical Head and Sill Detail



150mm

100

50

10mm

0

H1.2 LVL studs @ 480crs

9mm MAGNUM board® wall lining, paint finish

9mm Magnum Board® rigid air barrier fixed with Paslode Impulse nail 65x2.8mm SS round drive. Refer to Magnum Board® rigid air barrier technical manual specifications.

H3.2 pine 40x40mm vertical structural cavity battens @ stud crs. Nail fixed @ 600crs. Refer schedule below

50mm SS clinch nails @ board laps

HBB Earthen Horizontal Shiplap cladding

Cladding face fixed with Silicon Bronze Rose head 65x3.25mm annular grooved nails

H3.1 packer supplied and installed by Flashman

Flashman® extruded 40mm aluminium jamb flashing

10

10mm Nominal gap

Foreverbeech® timber reveal and architrave

Continuous flexible air seal PEF backing rod to perimeter of opening

H3.2 timber packer as required

Thermaflash flashing tape dressed into opening and 50mm over face of rigid air barrier

Selected aluminium joinery

Head flashing over (shown dashed)

10mm min. joinery cover over jamb flashing

Line of flashing slimline® sill below

2mm gap between shiplap and jamb flashing.

Typical Jamb Detail

1 : 5

DO NOT FIX THROUGH JAMB FLASHING

Fixing Note:

90mm x 3.15mm flat head stainless steel nails are required when connecting through Magnum board or into CCA treated timber.

Refer page 15/15 for batten fixing details. 45x20 H3.2 non-structural cavity battens can be installed provided cladding fixing is guaranteed at a minimum 30mm framing.

12/15

HT51 Horizontal Shiplap Details

Typical Jamb Detail



150mm

100

50

10mm

13/12/2021 1:14:28 PM

Thermaflash flashing tape dressed into opening
and 50mm over face of rigid air barrier

18mm Magnum Board® flooring

Continuous PEF backing rod
to perimeter of opening

H1.2 LVL timber joist, refer
to drawings

12mm gap between stringer and
cladding/joinery

Decking as per drawings, joist sizes
and fixings in accordance with
NZS3604:2011

Deck stringer and fixings in
accordance with NZS3604:2011
or specific engineering design

9mm Magnum Board® rigid air barrier fixed
with Paslode Impulse nail 65x2.8mm SS
round drive. Refer to Magnum Board® rigid
air barrier technical manual specifications.

H3.2 pine 40x40mm vertical structural
cavity battens @ stud crs. Nail fixed @
600crs. Refer schedule below

Cavity closer allow 15mm drip edge to
bottom of cladding

50mm SS clinch nails @ board laps

Cladding face fixed with Silicon Bronze
Rose head 65x3.25mm annular
grooved nails

HBB Earthen Horizontal Shiplap cladding

Deck Threshold Detail

1 : 2

Fixing Note:

90mm x 3.15mm flat head stainless steel nails are required
when connecting through Magnum board or into CCA
treated timber.

Refer page 15/15 for batten fixing details. 45x20 H3.2 non-
structural cavity battens can be installed provided cladding
fixing is guaranteed at a minimum 30mm framing.

13/15

HT51 Horizontal Shiplap Details

Deck Threshold Detail



150mm

100

50

10mm

0

HBB Earthen Horizontal Shiplap cladding

Cladding face fixed with Silicon Bronze
Rose head 65x3.25mm annular
grooved nailsVanluk rubber boot with adhesive
collar. refer to www.vanluk.co.nzuPVC flange plate with Mapeflex to
top half of flangeMapeflex PU45 continuous around
pipe to cladding joint

Pipe penetration sloping to outside

MS sealant continuous around pipe to
cladding joint

50mm SS clinch nails @ board laps

H3.2 pine 40x40mm vertical structural
cavity battens @ stud crs. Screw fixed
@ 600crs. Refer schedule below9mm Magnum Board @ rigid air barrier
fixed with Paslode Impulse nail 65x2.8mm
SS round drive. Refer to Magnum Board
@ rigid air barrier technical manual
specifications.Butynol flashing over rubber boot as per
vanluk installation instruction

H1.2 LVL studs @ 480crs

Solid blocking around penetration
with minimum 75mm overlap to RAB9mm Magnum Board@ wall lining,
Foreverbreathe paint finishWall lining fixed with Fortress
6x32 C3 galv screws

Pipe Penetration Section Detail

1 : 5

Fixing Note:

90mm x 3.15mm flat head stainless steel nails are required
when connecting through Magnum board or into CCA
treated timber.

Refer page 15/15 for batten fixing details. 45x20 H3.2 non-
structural cavity battens can be installed provided cladding
fixing is guaranteed at a minimum 30mm framing.

Rigid air barrier fixed with Paslode
Impulse nail 65x2.8mm SS round drive.
Refer to Magnum Board @ rigid air
barrier technical manual specifications.9mm Magnum Board@ wall lining,
Foreverbreathe paint finish50mm SS clinch nails @
board laps

HBB Earthen Horizontal Shiplap cladding

Mapeflex PU45 continuous around
pipe to cladding jointuPVC flange plate with Mapeflex to
top half of flangeSupport pipe with a nog under and
screw fixed strap over

H1.2 LVL studs @ 480crs

Butyl flashing over rubber boot per
vanluk installation instructionVanluk rubber boot with adhesive collar.
Refer to www.vanluk.co.nzH3.2 pine 40x40mm vertical structural
cavity battens @ stud crs. Nail fixed @
600crs. Refer schedule belowCladding face fixed with Silicon Bronze
Rose head 65x3.25mm annular
grooved nails

Pipe Penetration Plan Detail

1 : 5

14/15

HT51 Horizontal Shiplap Details

Pipe Penetration - Plan & Section Detail



150mm

100

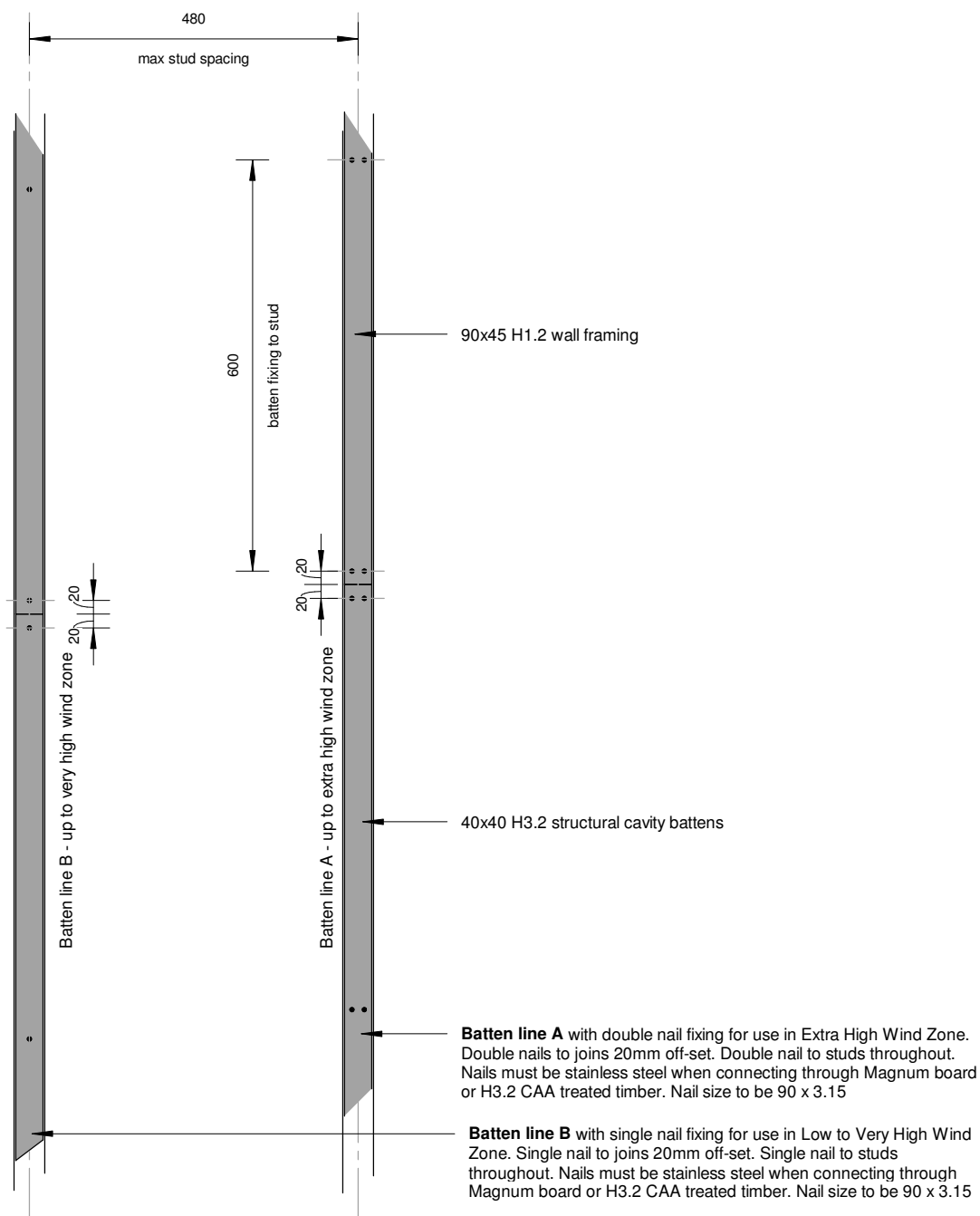
50

10mm

0

Batten Fixing

1 : 10



13/12/2021 1:14:29 PM



15/15

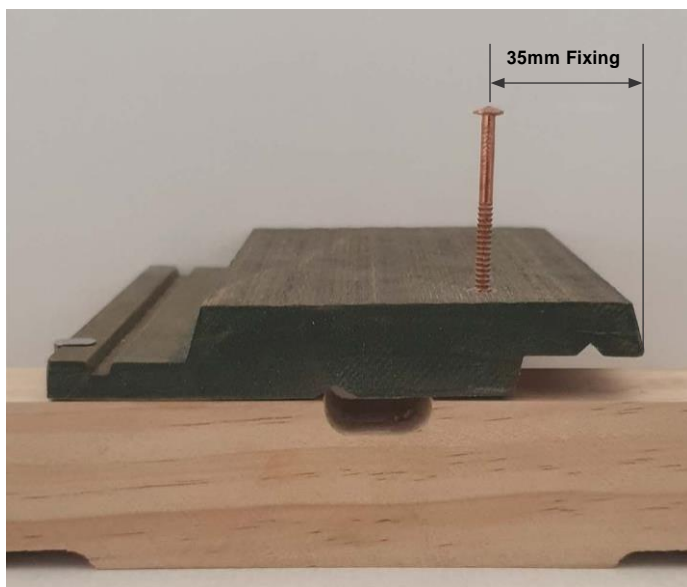
HT51 Horizontal Shiplap Details

Batten Fixing

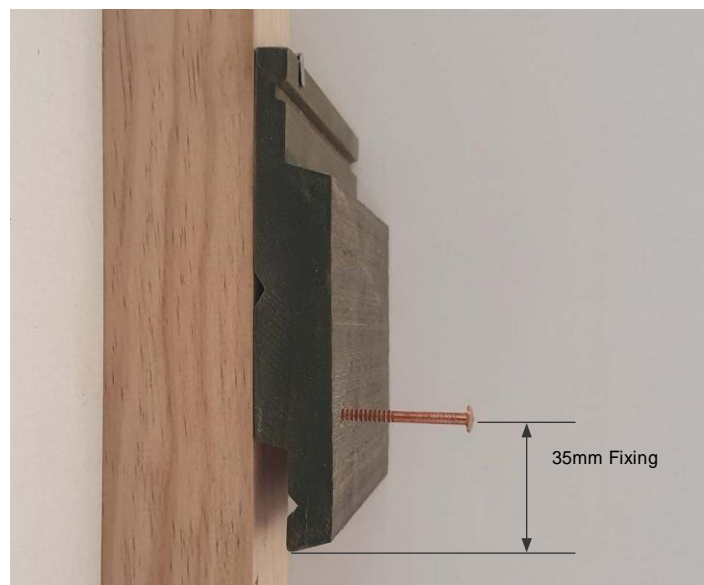


Nail Fixing Positions - Including Clinch Nail

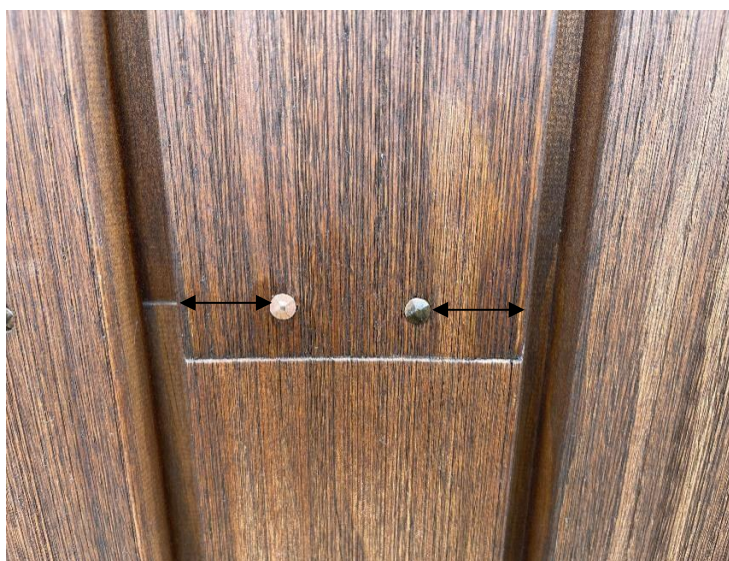
Pre-bore using 3.5mm drill size



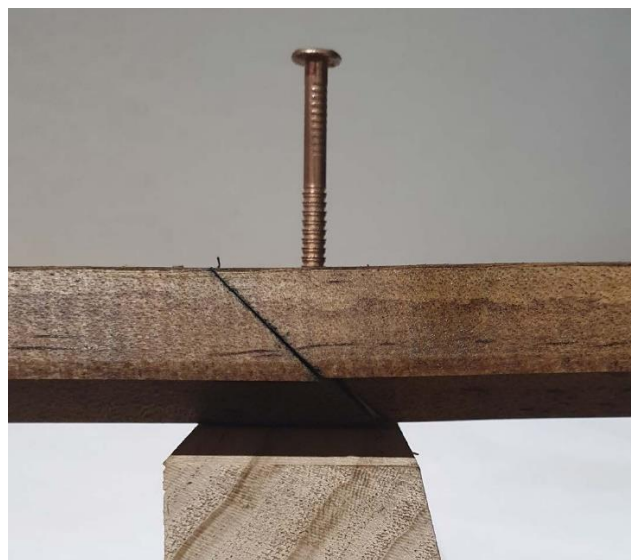
Installed vertically on 45mm or 20mm castellated batten



Installed horizontally on 45mm or 20mm cavity batten

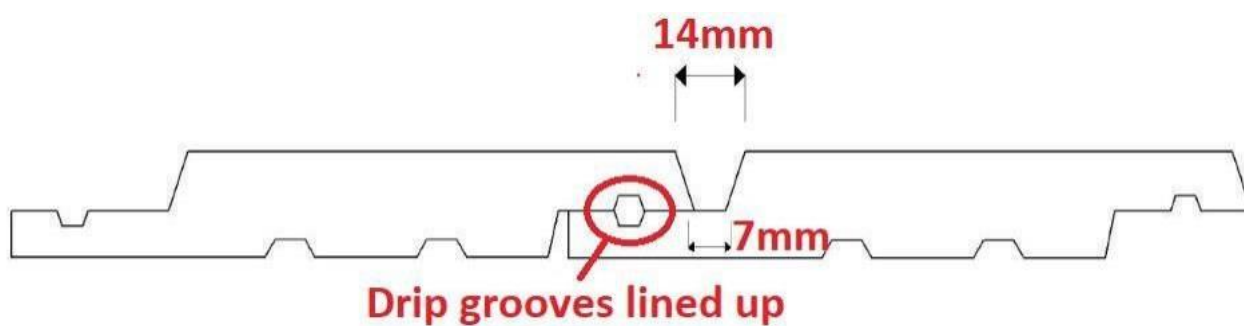


Scarf Joint Face Fixing Position
32mm in from edge of brushed face to centre of nail



Scarf Joint on 45mm or 20mm cavity batten

Positioning of boards including drip grooves



Storage & Handling

Timber cladding per-coated or uncoated must be stored on a well-ventilated timber structure on bearers at least 250mm above ground and 90mm bearers over concrete / solid surface. Timber must be protected from weather, rain, and direct sunlight before installation.